

Lending Analytics Dashboard

Enhance operational efficiency with global insight

Managing lending activity can be challenging due to its fragmented nature and lack of centralised information, making it difficult for clients to gain a global view of their lending activities across multiple products and multiple accounts.

Clearstream's **Lending Analytics Dashboard** provides a proactive solution to streamline the management of lending activities. This tool consolidates historical data into a user-friendly dashboard, providing clients with a holistic view of their lending activities. With global insights, clients can enjoy full transparency of their lending activity with Clearstream and be better understand how their portfolio behaves in our securities lending programmes.

How can the Lending Analytics Dashboard benefit you and your business?

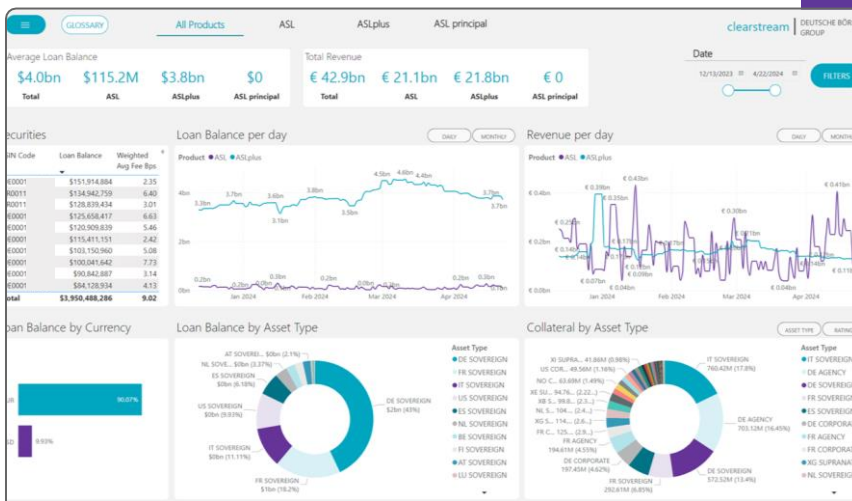
By leveraging this intuitive tool, you can gain data-driven insights, enhance operational efficiency and gain transparency into how your portfolio is performing at Clearstream.

- **Trend analysis and global perspective:** Access historical data to gain insights into your lending activity and performance with desired view of frequency.
- **Lending portfolio visualisation and breakdown:** Gain a detailed understanding of your lending portfolio, including top securities, asset type, and product type.
- **Data-driven decision making:** Leverage comprehensive data and insights to make informed decisions and better understand how your portfolio is behaving in our lending programmes.

Key features of the Lending Analytics Dashboard

The Lending Analytics Dashboard provides a comprehensive view of your lending activities through the following elements:

- **Annual, monthly, and weekly KPIs:** Total revenue, loan balances and trends of these KPIs.
- **Lending portfolio insights:** By account, product, top securities, currency, asset type and product type.
- **Customised reports:** The ability to access data points on both the principal side of the loan leg as well as the collateral leg, with the flexibility to group daily reports over a desired time period and selected accounts.



To find out more about our Lending Analytics Dashboard and other data products, contact our Relationship Manager or [email us](#).