

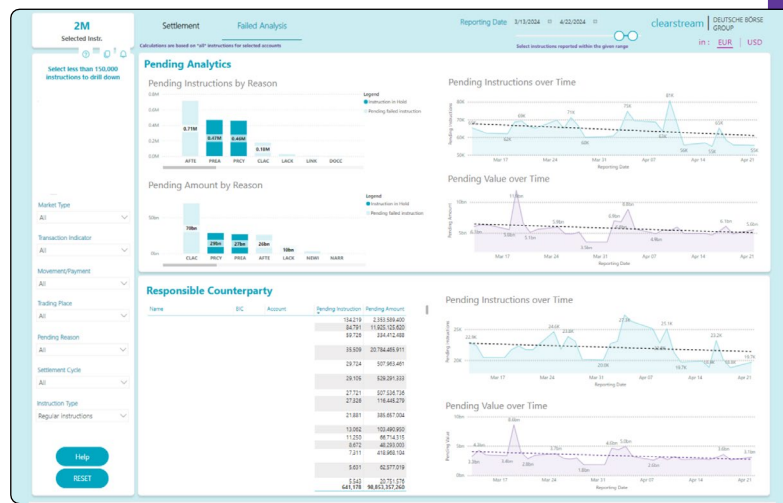
# Settlement Data Solutions

## Look at the past, present and future of settlement

The settlement landscape is constantly evolving, with regulations such as CSDR and T+1 creating new challenges for financial institutions. Clearstream's suite of settlement data tools, including our cutting-edge **Settlement Prediction** tool and **Settlement Dashboard**, empowers you to stay ahead of the curve. Gain the insight and foresight you need to adapt to change, mitigate risk, and optimise your settlement operations for long-term success.

### Benefits

- Increase settlement efficiency to reduce cash penalties
- Predict potential failures and take preventive actions to avoid costly penalties
- Identify settlement with the highest probability of failure and focus operational efforts on them
- Optimise analysis across T+1 and T+2 settlement cycles to ensure both operational resilience and settlement efficiency
- Gain actionable insights through customizable filtering and visualizations
- Generate management information to evidence performance improvements over time



**\$157 bn**

The estimated cost of resolving failed trades by 2025

**80%**

of operational cost in trade processing are caused by failing trades

### Insights into past and present settlement

Our settlement dashboard gives you visibility into your settlement activity by consolidating all data into one intuitive dashboard. Proactively identify potential failures, pinpoint bottlenecks and uncover hidden optimisation opportunities with advanced analytics. Drill down to specific details, prepare for T+1 and confidently navigate the evolving settlement landscape.

### Settlement Dashboard

### Insights into future settlement

Our AI-based settlement prediction tool calculates the probability that a specific instruction will settle on time 2 days in advance, guiding users on where to focus their operational efforts.

### Settlement Prediction Tool

To find out more about our data products, please contact your Relationship Manager or [contact us](#).