

# SettlementNext

## Ready for T+1. Built for What's Next.

**SettlementNext** is Clearstream's integrated suite of data tools designed to enhance settlement efficiency, reduce operational risk, and support proactive exception management.

With **2–3%** of settlement instructions in the euro area still **failing on their intended date**, SettlementNext addresses this challenge head-on.

Through its features (**Settlement Efficiency, Settlement Prediction, and T+1 Scorecard**), it delivers full visibility, predictive insights, and benchmarking capabilities to help clients navigate the evolving post-trade landscape.

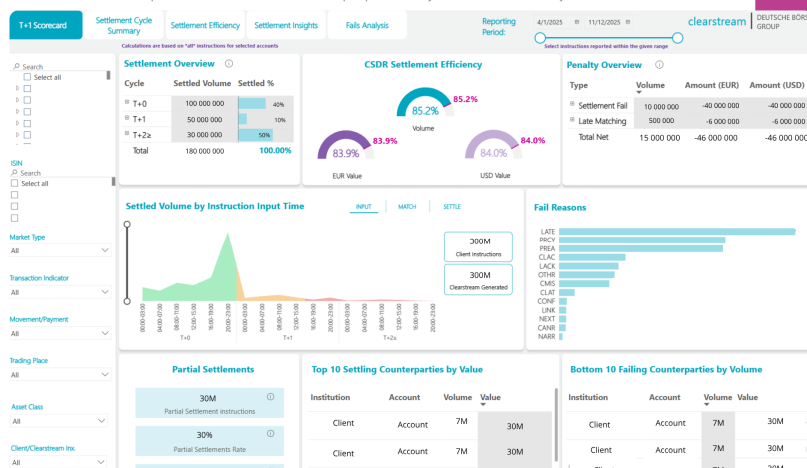
### How can you benefit from SettlementNext?

- Clear **settlement visibility**: quickly identify inefficiencies and stay T+1 ready.
- **AI-powered forecasting**: anticipate failures and estimate daily cash penalties before they happen.
- **Cycle performance tracking**: monitor settlement trends across T+0, T+1, T+2, and beyond to highlight key metrics and visualize activity patterns.
- **Peer benchmarking**: compare efficiency using trusted industry standards.
- **Counterparty insights**: spot failure patterns and high-risk relationships.
- **Custom reporting**: export detailed data and tailor views for analysis

### Key features of SettlementNext

- **Advanced settlement analytics**: get a clear, actionable view of your settlement operations. Pinpoint inefficiencies and analyze transaction-level data.
- **Settlement prediction**: predict settlement outcomes through AI-driven forecasting up to four days in advance. Pinpoints the top three drivers of settlement failure, estimate daily cash penalties, and take proactive steps to minimize risk.
- **T+1 Scorecard and cycle summary**: stay ahead of T+1 requirements and monitor readiness for accelerated settlement cycles with focused metrics, enhanced visualizations, and summaries of settlement activity and trends.
- **Efficiency metrics and peer benchmarking**: compare your performance against anonymized industry data and assess efficiency using ESMA, MSEI, and Clearstream methodologies.

The data and visuals presented are for illustrative purposes only and intended solely for demonstration.



To find out more about SettlementNext and other data products, please contact your Relationship Manager or [contact us](#).